



Waterberg Camp

Waterberg Plateau Park

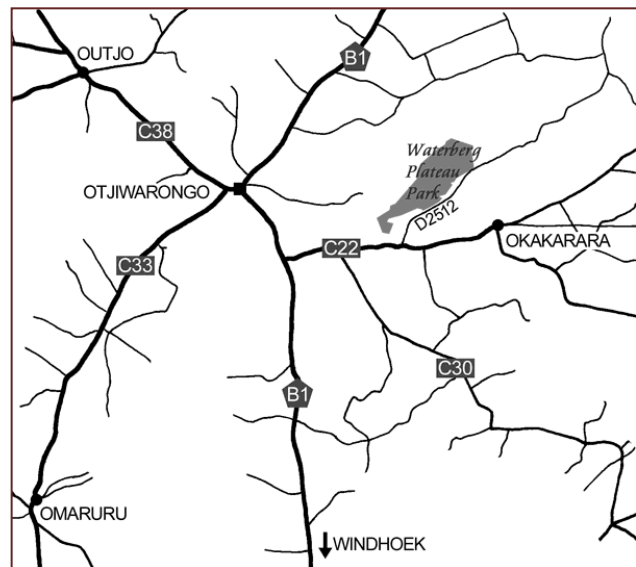
Fact sheet

Location: Waterberg Plateau Park, 20°30'51.74"S and 17°14'45.34"E
Type: Game Lodge

LOCATION

Waterberg Camp nestles along the base of the cliffs of the Waterberg Plateau, inside the National Park of the same name. It towers some 200m above the surrounding landscape, and the plateau with its sheer cliffs and fascinating rock formations, serve as a breeding area for endangered animal species.

Waterberg Camp is situated east of Otjiwarongo off the D2152. Turn north off the C22 onto the D2512 and the camp is 17 km from the junction on the northern side of the road.



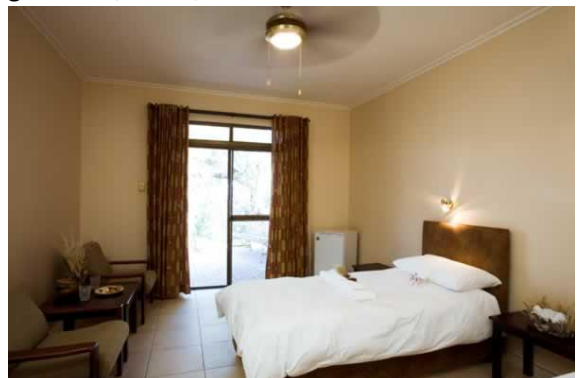
Reproduced courtesy of the Cardboard Box Travel Shop

ACCOMMODATION

Accommodation is in a combination of double rooms, premier (bush) and family chalets. Each room has an en-suite bathroom, with wrought iron vanity units and ceramic basins, (complementary toiletries and soft towels), a ceiling fan, twin bed with comfortable bedding, bedside lamps, a wardrobe, a dressing table with mirror, a couple of lounge chairs, a tea/coffee station and a mini-fridge. A big sliding door leads into a private porch area, complete with table and chairs. Some of the rooms have barbeque facilities

CATEGORIES

- **Family Chalet:** Self catering unit with two bedrooms, kitchenette and braai (barbeque) area



- **Premier Bush Chalet:** deluxe double chalet with queen size bed, en-suite bathroom, fridge & tea station
- **Bush Chalet (4 adults):** two bedroom chalet, both rooms en-suite, lounge area, fridge, tea station and braai area
- **Bush chalet (2 adults):** double chalet with bathroom, lounge area, fridge, tea station and braai area
- **Double Room:** room with en-suite bathroom, fridge & tea station

ROOM FEATURES

- Lighted make-up mirror and desk, Hairdryer
- Lounge area with couch and coffee table
- Private tea and coffee station

GUEST SERVICES

- Tourist shop
- Laundry service upon request
- Free Parking

THINGS TO DO

There are a number of activities at Waterberg, including:

- Daily guided 4x4 game drives to the plateau, These are available in the morning the afternoon
- A selection of shorter walking trails around the camp, which you can explore by yourself, in the morning or afternoon.
- The fit and active can climb up to a look-out point on the top of the plateau. What a view!

A variety of animals can be viewed in and around the plateau, including black and white rhinoceros, buffalo, sable and roan antelope, and the diminutive Damara Dik-Dik, which can be observed at close quarters foraging around the camp. Over 200 bird species have been recorded in the area, including the only colony of the endangered Cape Vulture, left within Namibia.

DINING

The restaurant and bar are still located in the old, historic Rasthaus, which was built in 1908 and originally used as a police post.

Breakfast is served between 06h30 and 08h30, and consists of a buffet offering cereals, fruit, yoghurt, breads, cheese, meats and eggs and bacon. Tea and coffee are available throughout the day. Dinner is served between 19h00 and 21h00, with a choice from the chef's À la carte menu. The food and service here



are of a decent standard, it has always had the reputation as one of Namibia's best rest camps.

PRICING

- Rack rates include 15% VAT and Tourism levies.
- Rack rates are subject to change without prior notice and are subject to NWR's terms and conditions.
- Children under the age of 6 stay free of charge.
- Children 6-12 years old pay 50% on rack rate, not commissionable.
- Participation of children under the age of 6 in guided activities is at the discretion of the Camp Manager and cannot therefore be pre-booked. Such participation is at the risk of the parent/guardian.
- Provision for children will be made upon arrival; however the booking must be made in advance.
- No more than two children may share a room with their parents.
- Disabled access units are available at a number of our facilities – please enquire and specify when booking.
- Tour operators, both in Namibia and abroad, qualify for commission at the discretion of NWR.
- Meals are non-commissionable.

		November 2011 – May 2012		June 2012 – October 2012	
		Accommodation		Accommodation	
Unit description	Qualifier	Per person sharing	Single rate	Per person sharing	Single rate
Camp site (max 8 people)		100 per site	100 per person	100 per person	100 per person
Double room	BB	350	350	450	550
Bush Chalet (2 beds)	BB	500	500	550	650
Bush chalet (4 beds)	BB	500	NA	600	NA
Family chalet (4 beds)	BB	550	NA	650	NA
Premier Bush chalet (2 beds)	BB	750	750	850	950
Guided morning drives		450 per person		450 per person	
Guided afternoon drives		450 per person		450 per person	

AREA ATTRACTIONS

- Terrain is suitable to hiking; and fitness and vitality
- Ancient fossilized Dinosaur footprints on the plateau
- Plant diversity
- Colonial cemetery at the base of the mountain

Namibia Wildlife Resorts (PTY) Ltd, currently operates 18 lodges and Campsites in Etosha National Park, Namib Naukluft Park, Skeleton Coast Park, Waterberg Plateau Park and /Ai-/Ais Richtersveld Trans frontier Park. For more information on this or other NWR Camps, or reservations, contact reservations@nwr.com.na or visit the company web site at www.nwr.com.na

For additional information:
Telephone: +264 61 2857167
Facsimile: +264 61 224900
Email: info@nwr.com.na

NWR
namibia wildlife resorts

