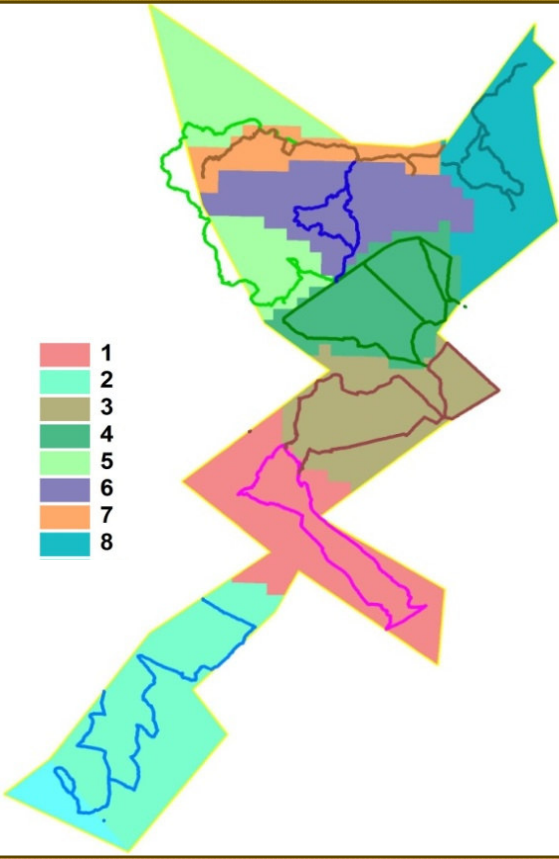


GONDWANA CAÑON PARK

GAME COUNT 2008



COUNT ZONATION & ROUTES



ROUTE & SPECIES PARAMETERS

Route Parameters	ROUTES								Totals
	1	2	3	4	5	6	7	8	
Route Length (km)	55.3	61.4	57.4	60	32	33.7	23	40.7	363.5
Area of Zone (km ²)	174	225	134	126	126	134	55	128	1102
Duration of Count (hrs)	5:35	6:25	7:35	7:00	2:40	4:50	3:45	3:45	41:35

SPECIES	EFFECTIVE STRIP WIDTHS (m) (Area effectively surveyed either side of road)							
	1	2	3	4	5	6	7	8
Gemsbok	700	482	424	476	482	482	482	482
Springbok	363	278	323	355	278	278	278	278
Kudu	600	354	394	450	354	354	193	354
Hartmann's Mountain Zebra	539	600	539	539	600	693	631	631
Ostrich	1000	1000	900	800	1000	1000	1000	1000
Red Hartebeest	1000	1000	1000	1000	1000	1000	1000	1000
Steenbok	80	77	80	80	77	77	77	77
Klipspringer	270	250	270	270	250	293	264	264
Black-backed Jackal	99	99	99	99	99	99	99	99

OBJECTIVES OF COUNTING

Objective	Reasons why information is needed
1. Estimate the Numbers of game How many?	For: <ul style="list-style-type: none"> estimating stocking rates and biomass to manage the veld conditions and inter-specific competition; setting reasonable off-take quotas; determining the value of wildlife in the Park; providing information to visitors.
2. Produce wildlife Distribution maps Where are they?	For: <ul style="list-style-type: none"> land-use planning and zonation; monitoring veld condition in areas of high game concentrations; tracking distribution changes in response to rainfall or human factors such as water distribution, removal of fences, off-takes, etc.
3. Monitor Population Changes Is wildlife increasing or decreasing?	For: <ul style="list-style-type: none"> monitoring changes per species per year; To assist management to achieve its objectives for wildlife management, biodiversity conservation and the protection of rare and vulnerable species.

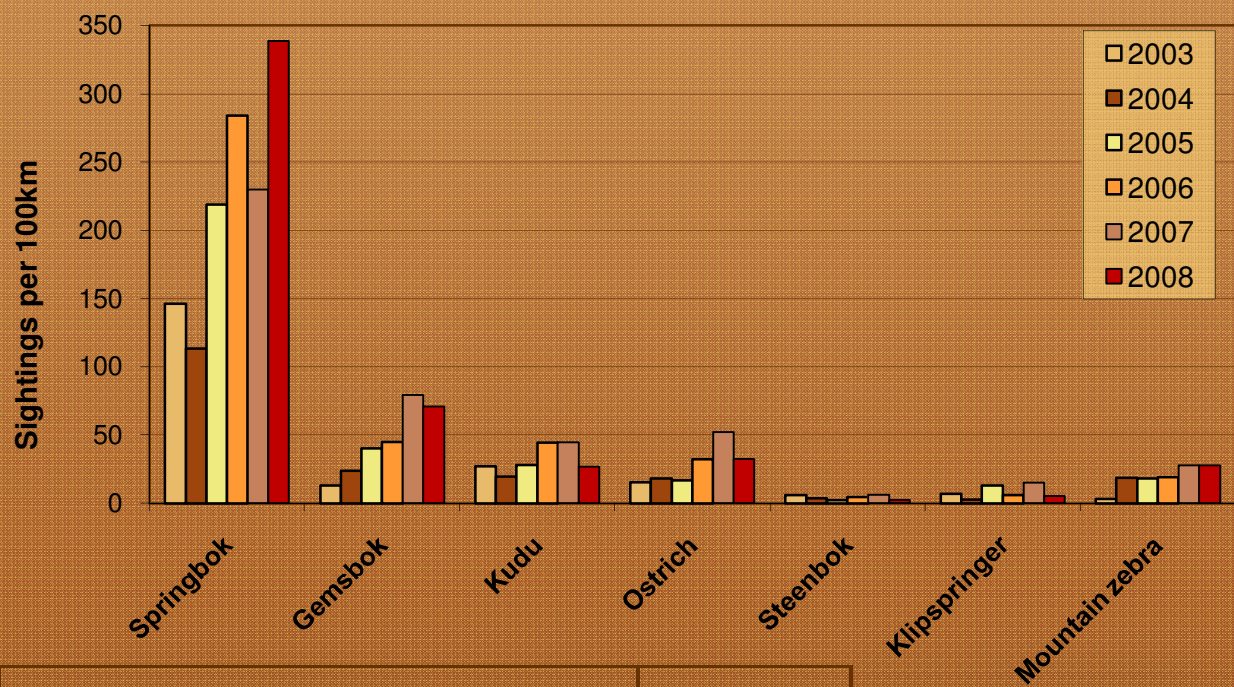
WILDLIFE POPULATION ESTIMATES

2003-2008

	2003	2004	2005	2006	2007	2008
Gemsbok	115	205	320	370	692	651
Springbok	2052	1488	2699	3481	3 809	4599
Kudu	351	254	368	601	695	422
Steenbok	350	228	140	293	353	182
Mountain Zebra	26	171	195	187	326	308
Ostrich	80	89	74	160	328	159
Red Hartebeest	0	15	6	4	2	38
Klipspringer	141	64	243	118	393	132
Jackal	0	0	53	47	155	103
Burchell's Zebra (known numbers)					(26)	(29)
Total	3 115	2 514	4 098	5 261	6 779	6 623

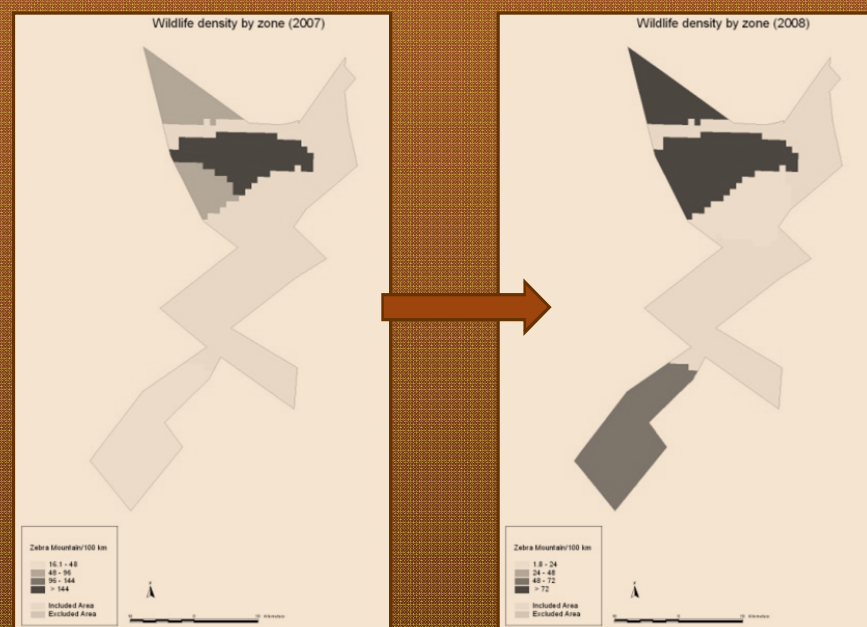
SIGHTINGS per 100 km DRIVEN

2003-2008



Hartmann's Mountain Zebra Distribution

2007 & 2008



TOTAL ESTIMATED WILDLIFE BIOMASS

TARGETS

Year:	2003	2004	2005	2006	2007	2008	70% rainfall	100% rainfall
Biomass (kg):	1.79	1.98	2.91	3.80	5.09	4.61	5.43	6.42



Thank You to Everyone!

For more information contact:
Rachel & Danie Brand
 Park Wardens
 E-mail: park@gondwana-canyon-park.com