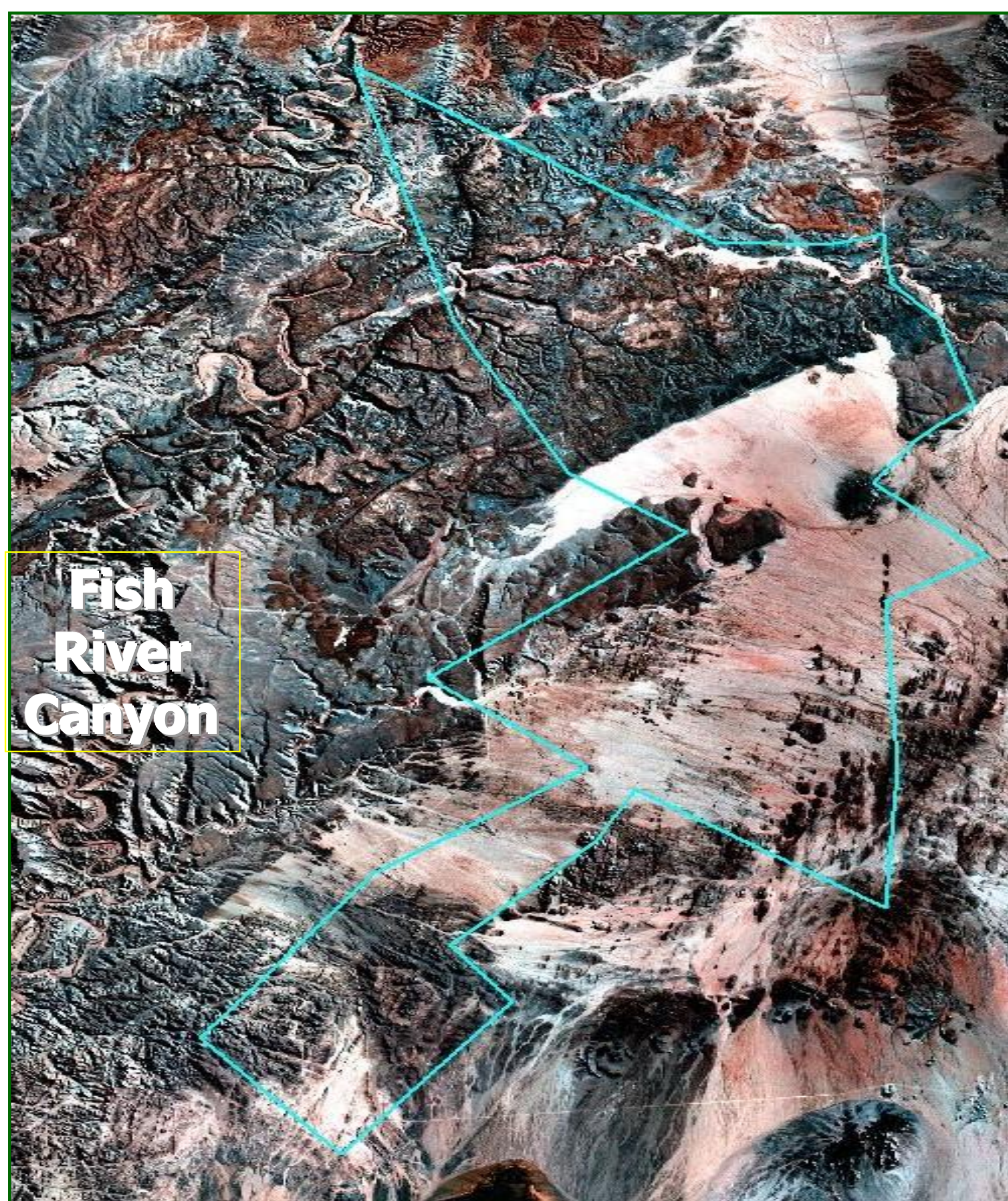


2004 Game Count in the Gondwana Cañon Park



OBJECTIVES OF COUNTING

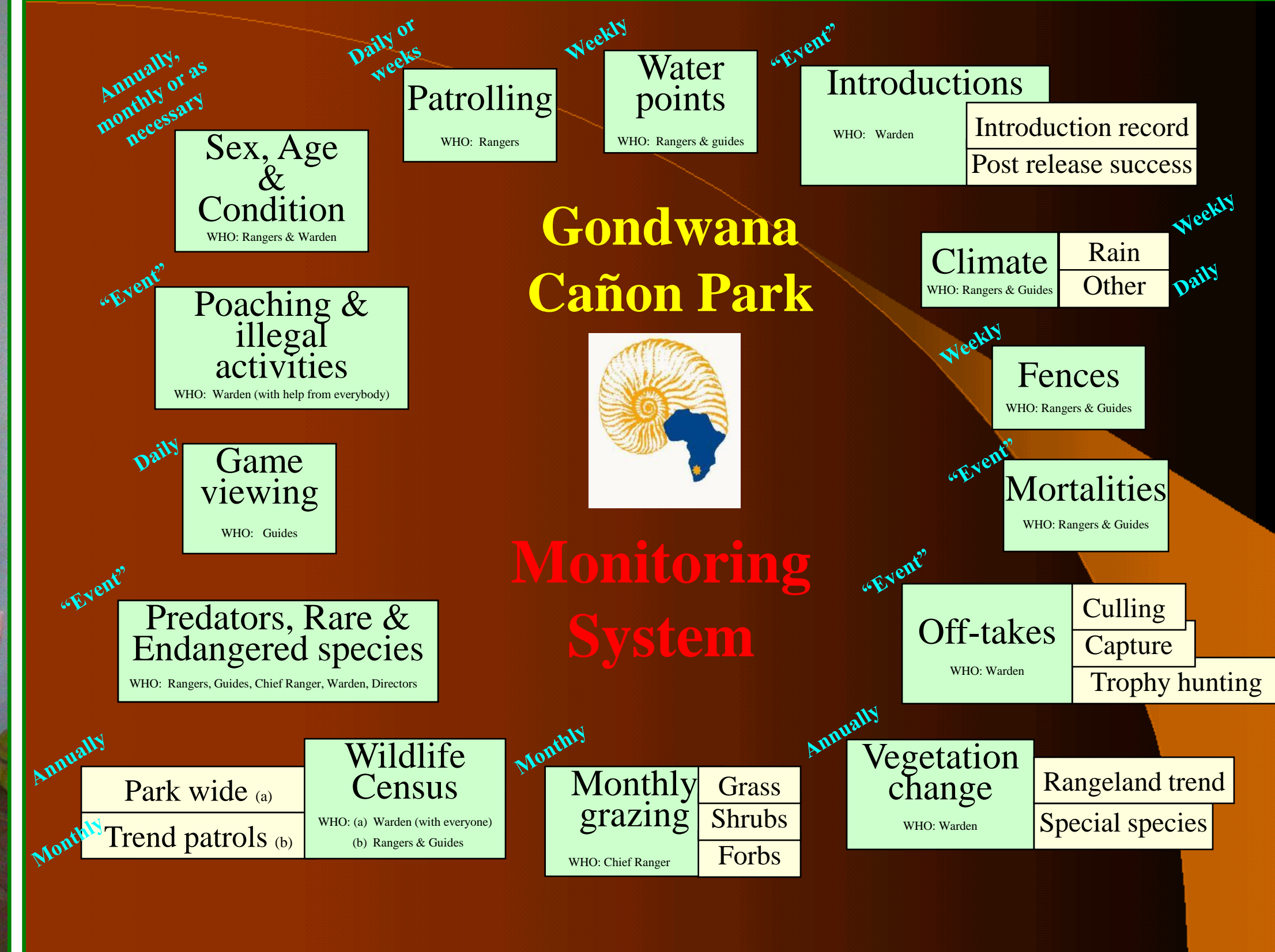
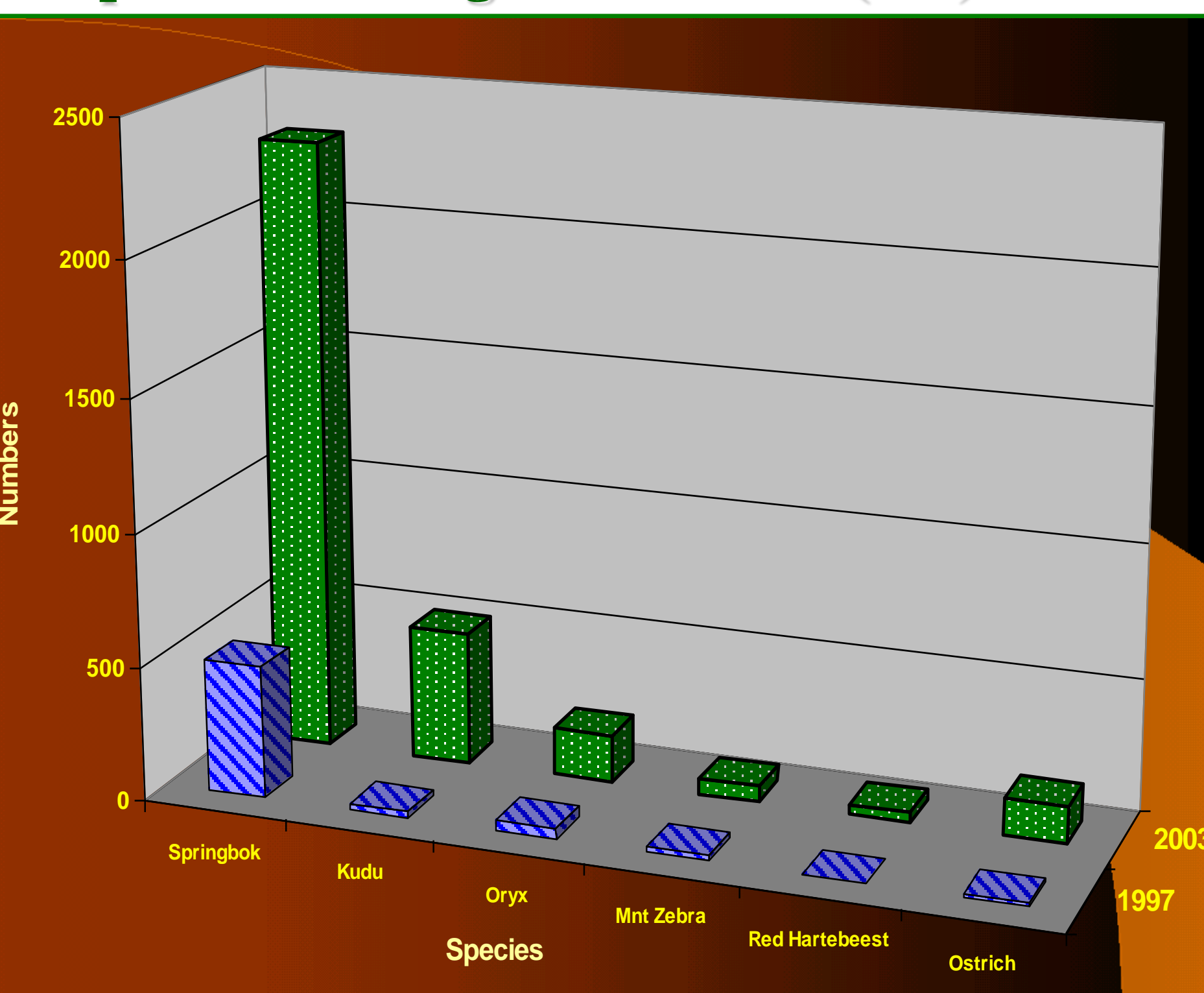
Objective	Reasons why information is needed
1. Estimate the Numbers of game How many?	For: <ul style="list-style-type: none"> estimating stocking rates to manage the veld and grazing conditions and competition between species; setting reasonable off-take quotas; determining the value of wildlife in the Park; providing information to visitors.
2. Produce wildlife Distribution maps. Where are they?	For: <ul style="list-style-type: none"> land-use planning and zonation; planning tourism routes; monitoring veld condition in areas of high game concentrations; tracking distribution changes from year to year in response to rainfall or human factors such as water distribution, removal of fences, off-takes, etc.
3. Monitoring Population Changes Is wildlife increasing or decreasing?	For: <ul style="list-style-type: none"> monitoring changes per species per year; management purposes, to assist the Park to achieve its goals and objectives for wildlife management, biodiversity conservation and the protection of rare and vulnerable species.



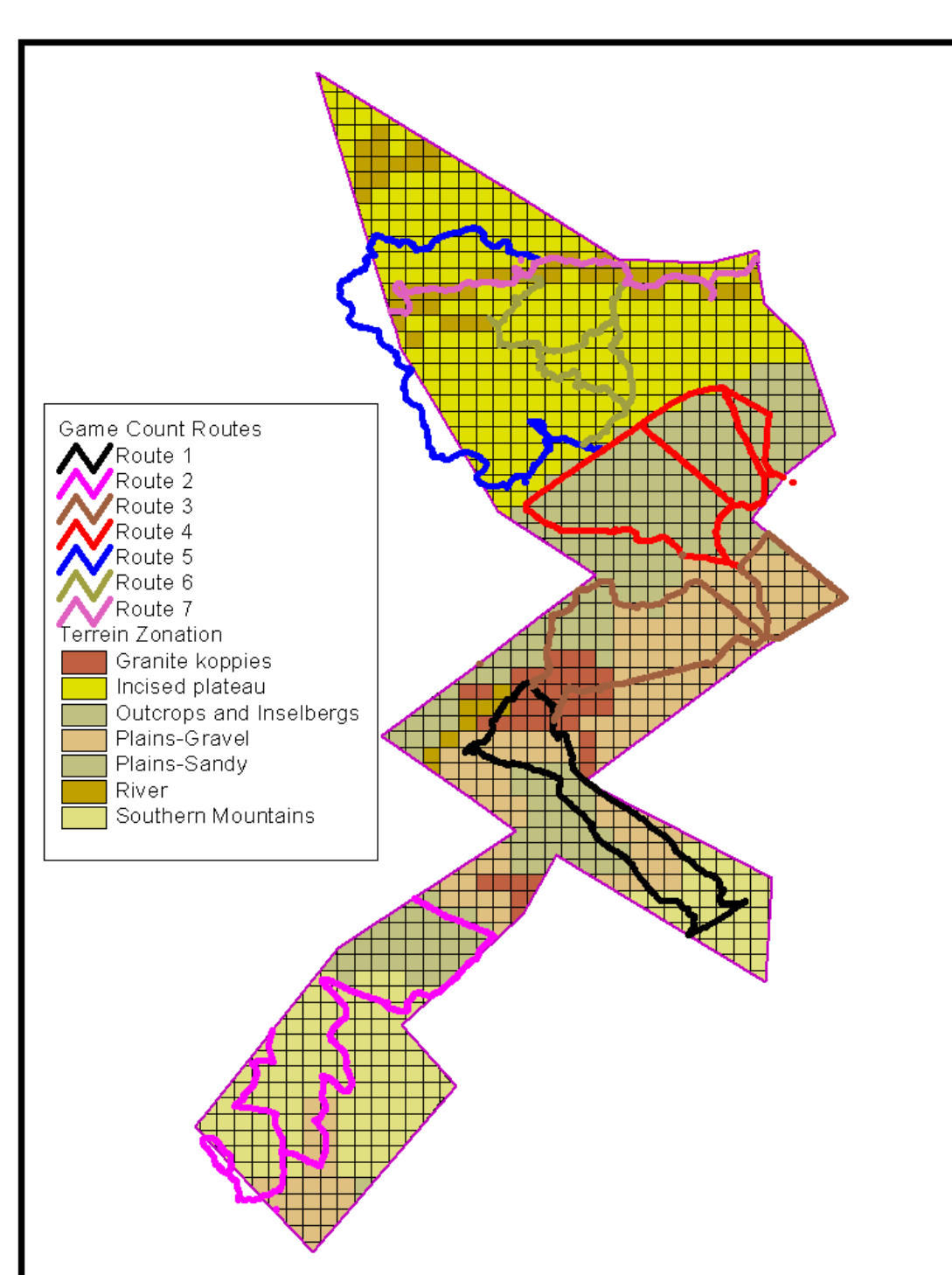
Gondwana Desert Collections
www.gondwana-desert-collection.com
 PO Box 80205, Windhoek, Namibia
 Tel: +264 (0)61 230066; Fax: +264(0)61 251863
 E-mail: nature.i@mweb.com.na



Population changes from 1997 (est.) to 2003



Routes, Zonation & Correction Factors

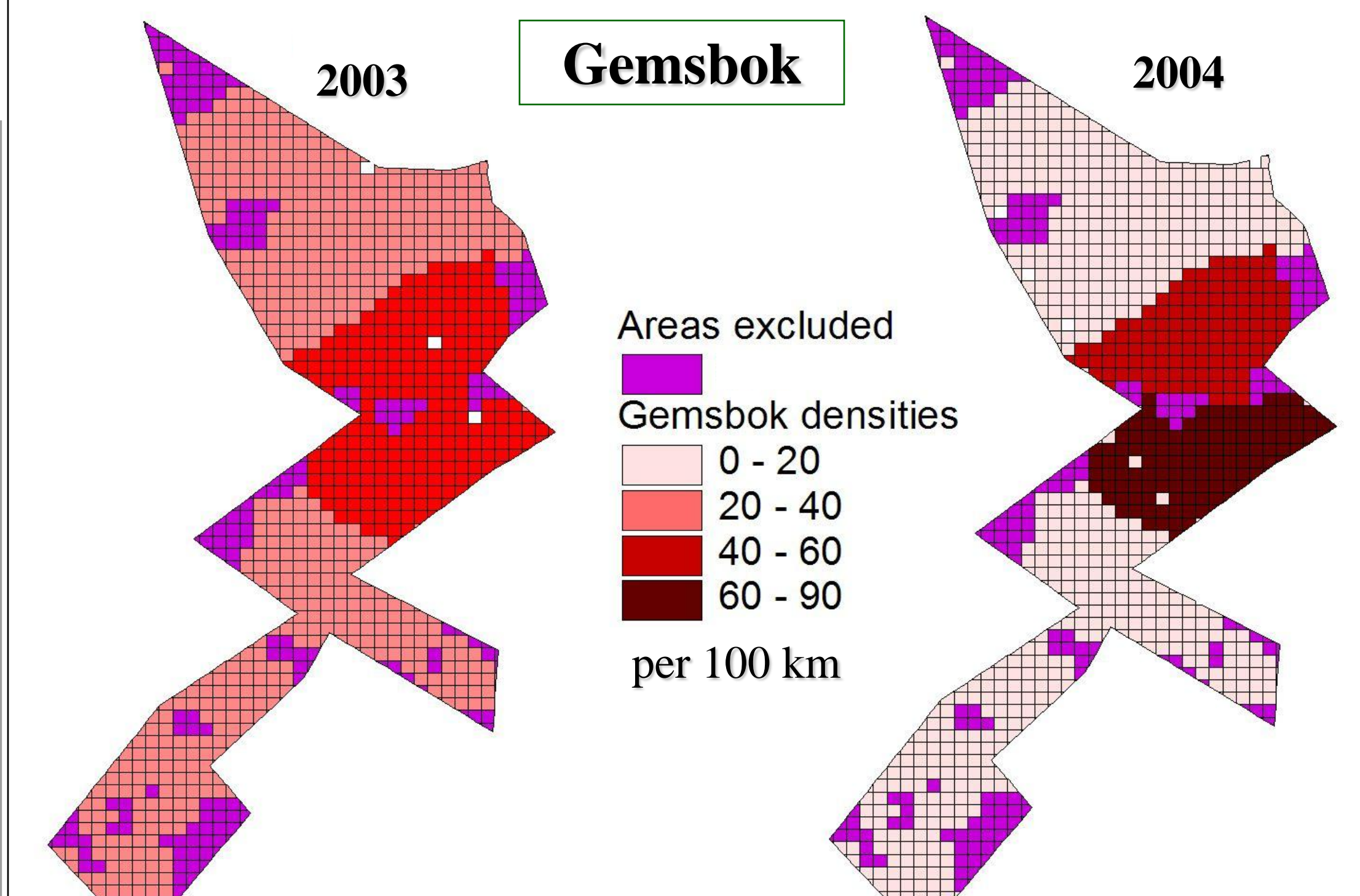


Route parameters	Routes							Totals
	1	2	3	4	5	6	7	
Route length (km)	47	60	55	49	37	41	28	317
Route width (km)	1.2	1.2	1.2	1.2	1.2	1.2	0.6	
Area sampled (km ²)	56.4	72.0	66.0	58.8	44.4	49.2	16.8	363.6
Time taken (h)	2h50	4h50	4h30	5h00	5h00	3h10	3h40	29h00
Area of zone (km ²)	151	172	132	128	127	122	56	888
Percent sampled (%)	37	42	50	46	35	40	30	41
Area correction factor	2.7	2.4	2.0	2.2	2.9	2.5	3.3	(2.4)

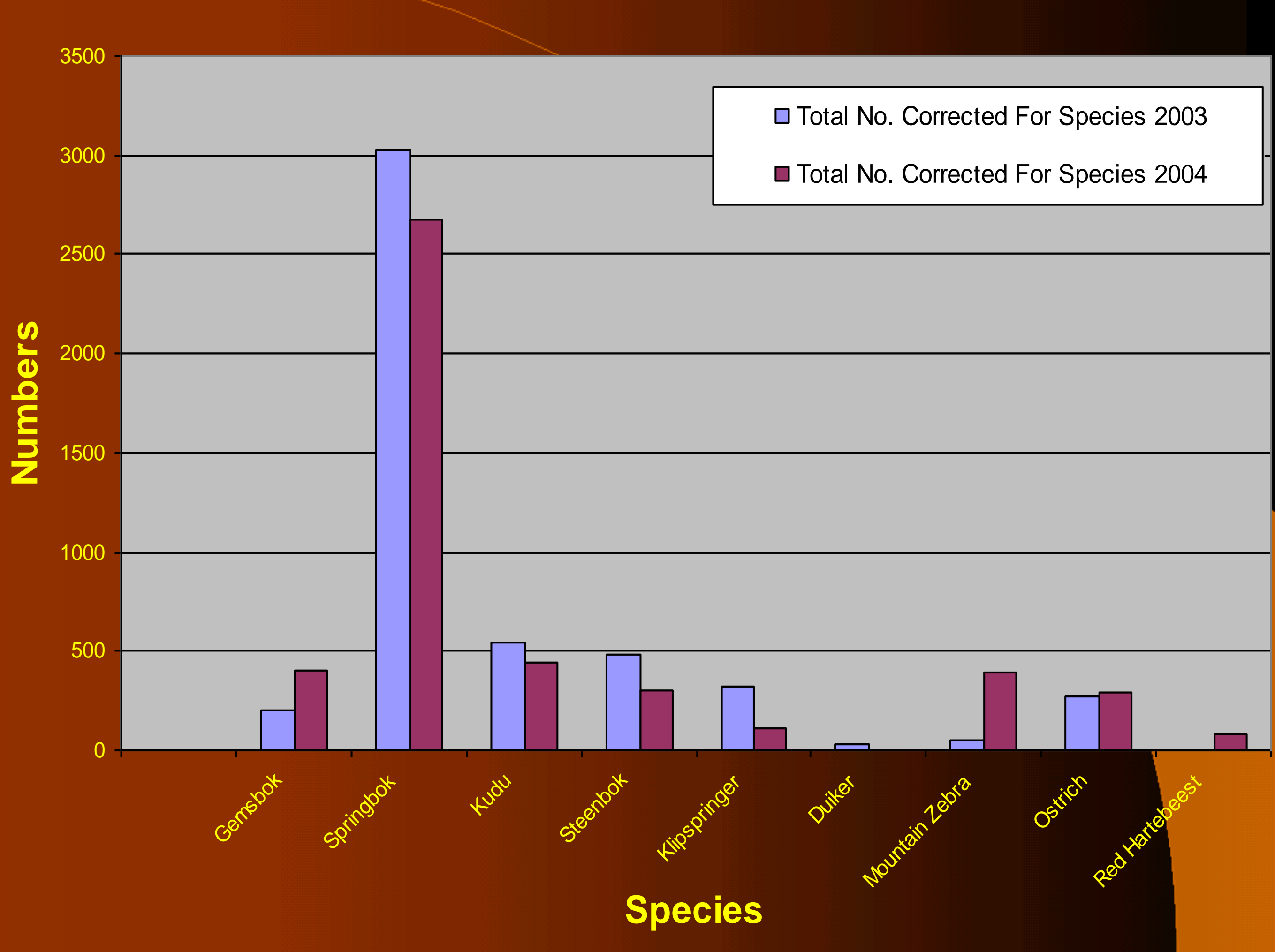
Total area of Park = 1092 km², area excluded = 204 km² or 18.7%

Species	Correction factor
Gemsbok	2.4
Springbok	2.9
Kudu	2.6
Steenbok	10.0
Klipspringer	5.0
Duiker	3.0
Zebra	2.0
Ostrich	2.1

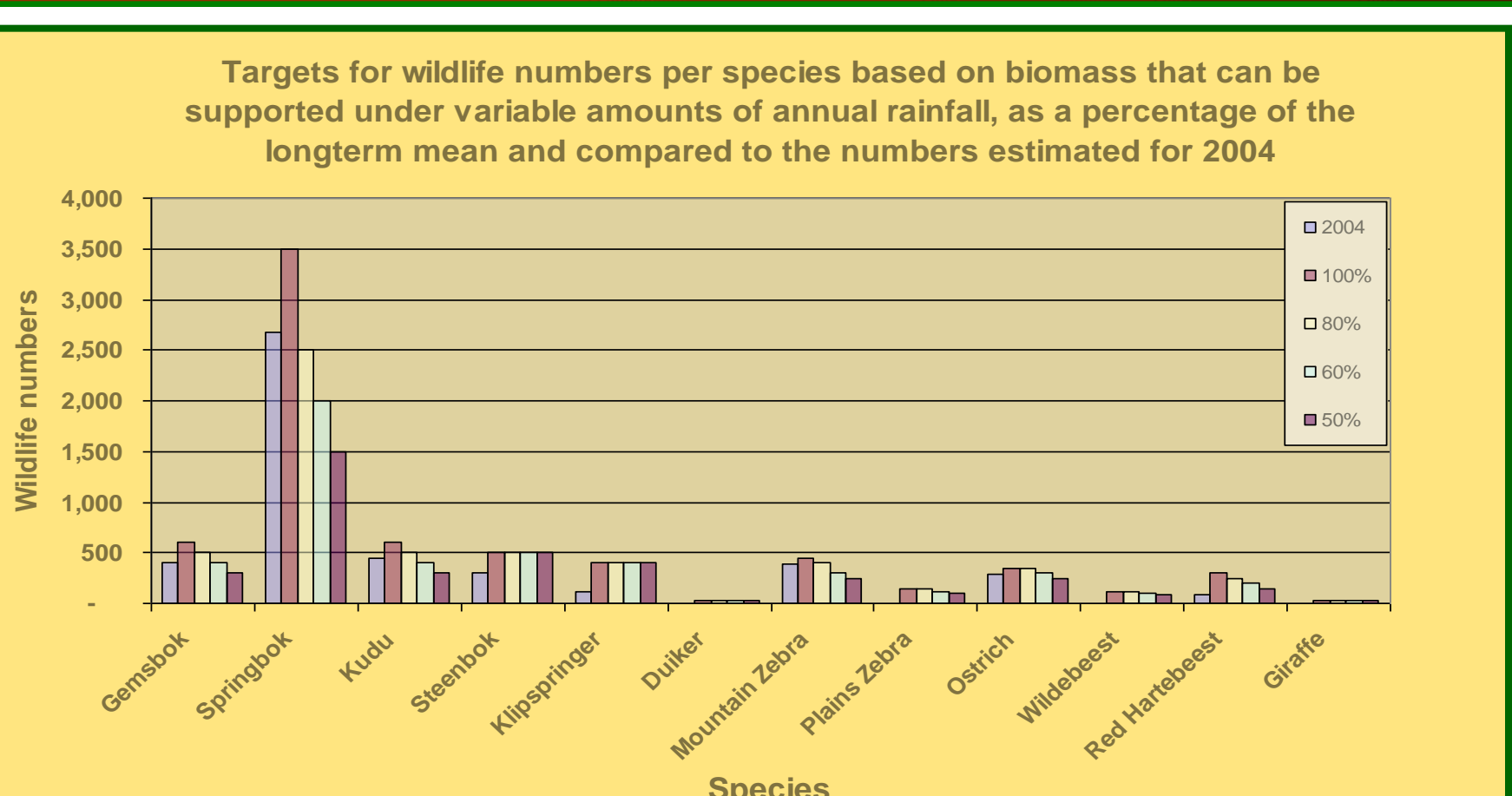
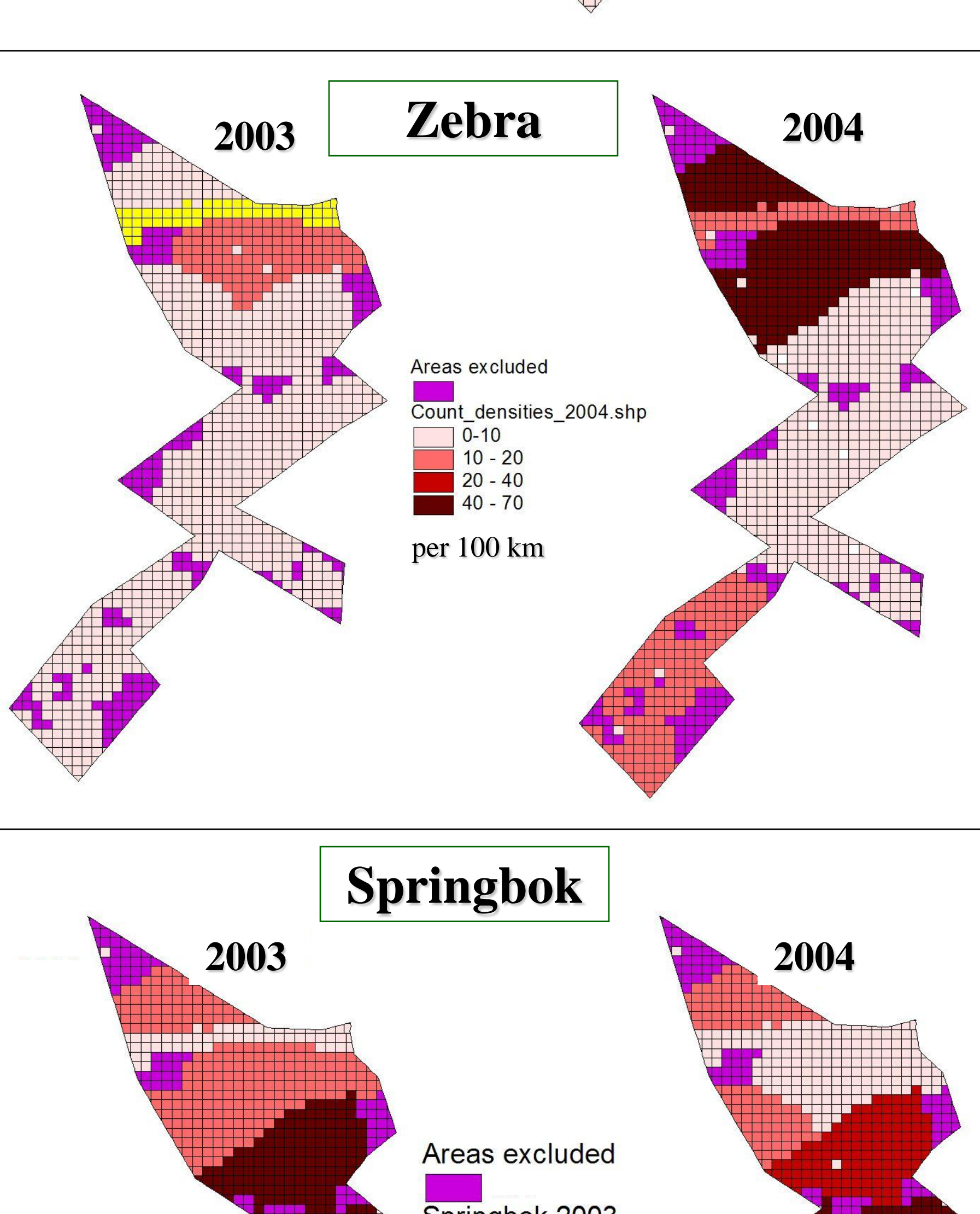
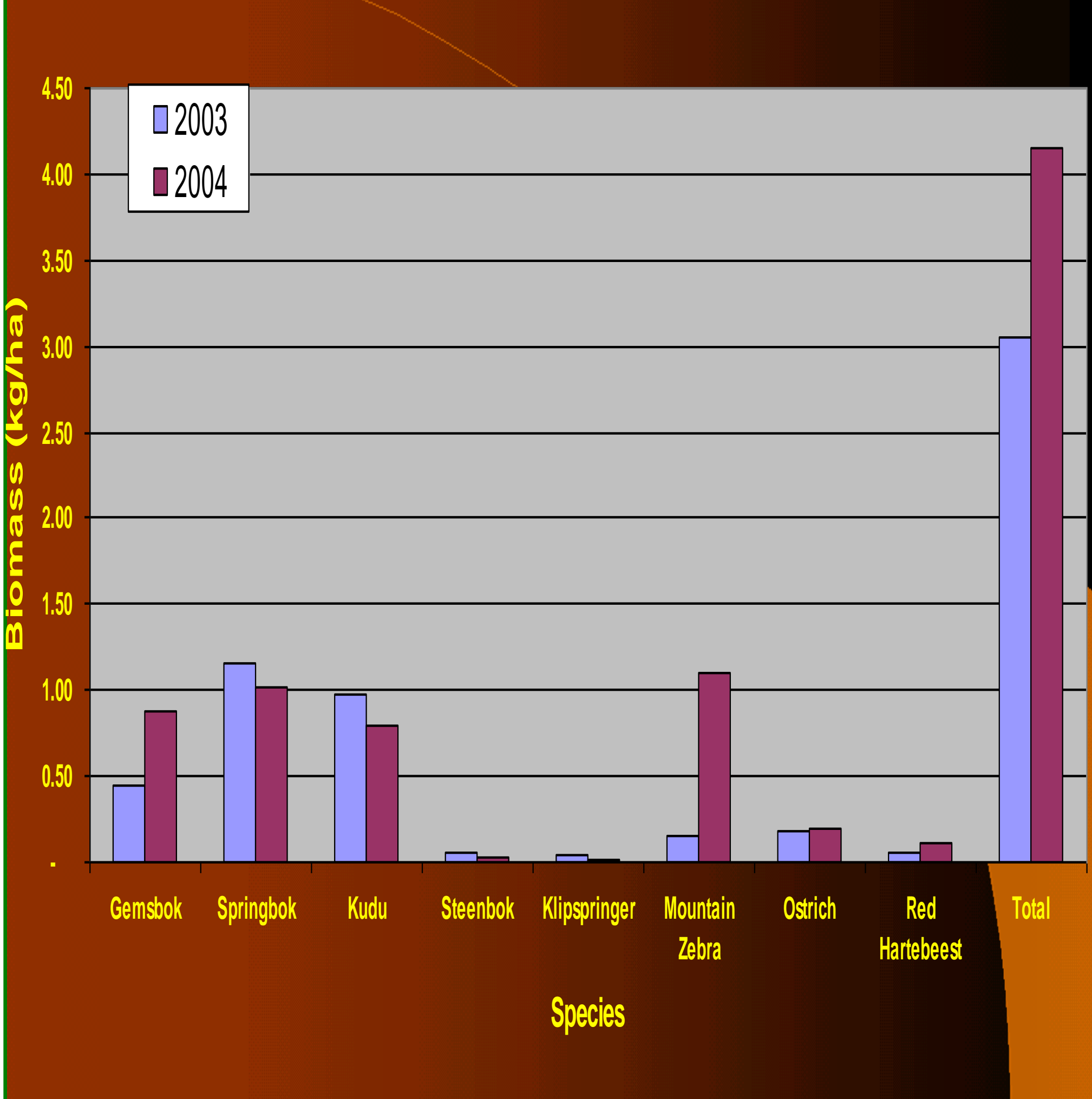
Population distributions in 2003 & 2004



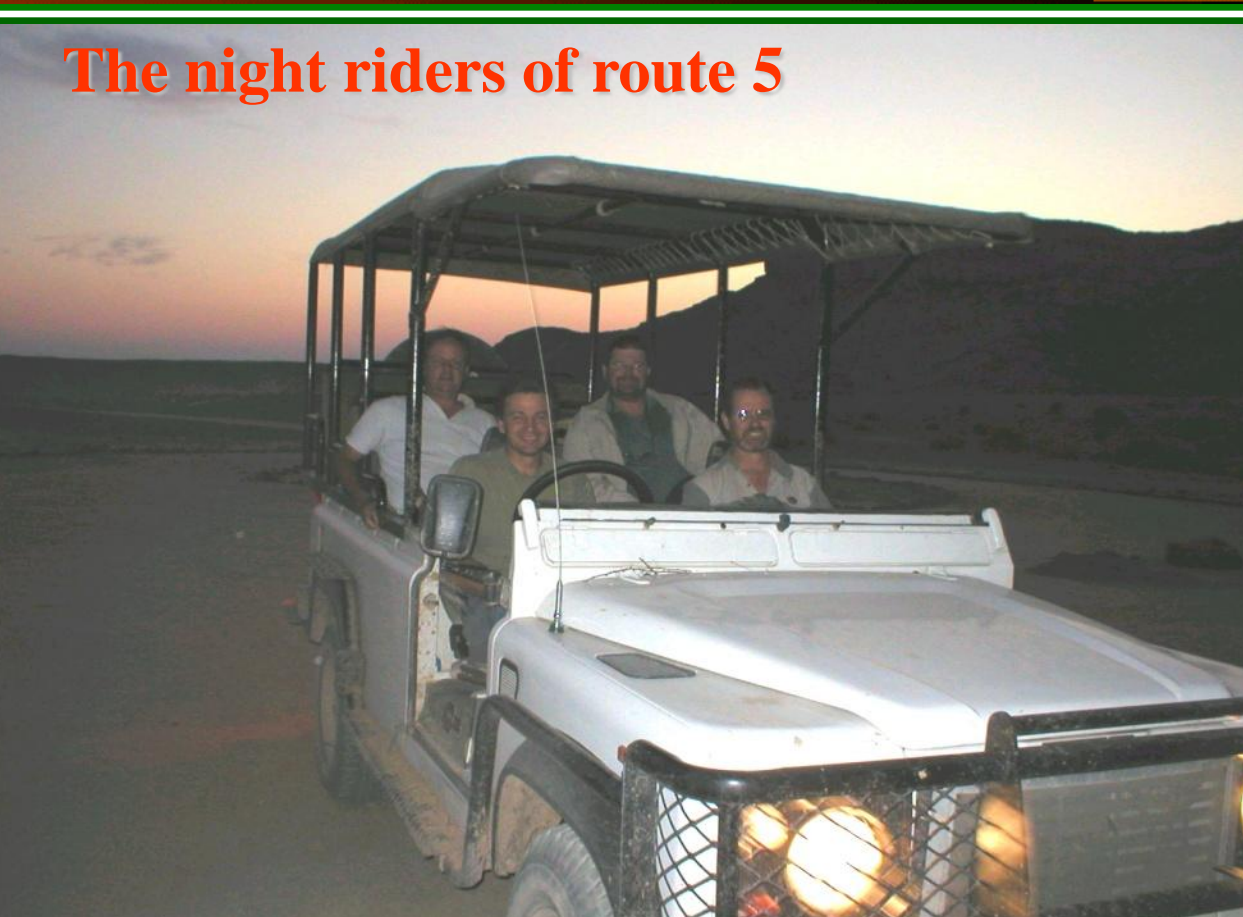
2003 & 2004 Gondwana Game Count Totals



Biomass per hectare for 2003 and 2004



Species	2003		2004	
	Number	Value (N\$)	Number	Value (N\$)
Gemsbok	202	242,400	401	481,200
Springbok	3,027	1,513,500	2,673	1,336,500
Kudu	542	813,000	444	666,000
Red Hartbeest	0	0	83	132,800
Mountain Zebra	53	185,500	395	1,382,500
Steenbok	482	96,400	303	60,600
Klipspringer	325	81,250	111	27,750
Ostrich	268	241,200	295	265,500
TOTAL	4,899	3,173,250	4,705	4,352,850



For more information contact:
 Mr. Otto von Kaschke
 Park Warden
 Tel:
 E-mail: